

# CERNITRICE IN CONDOTTA PER POLVERI CDC1



## CARATTERISTICHE COSTRUTTIVE :

Interamente realizzata in acciaio Inox Aisi304  
 Magneti in Ferrite 2800 Gauss o al Neodimio 6000 Gauss  
 Costruzione chiusa con bocche frangiate rettangolari o a richiesta con bocca di alimentazione tonda.  
 Saracinesca sotto la bocca di alimentazione per il dosaggio dello spessore di materiale sul tamburo.

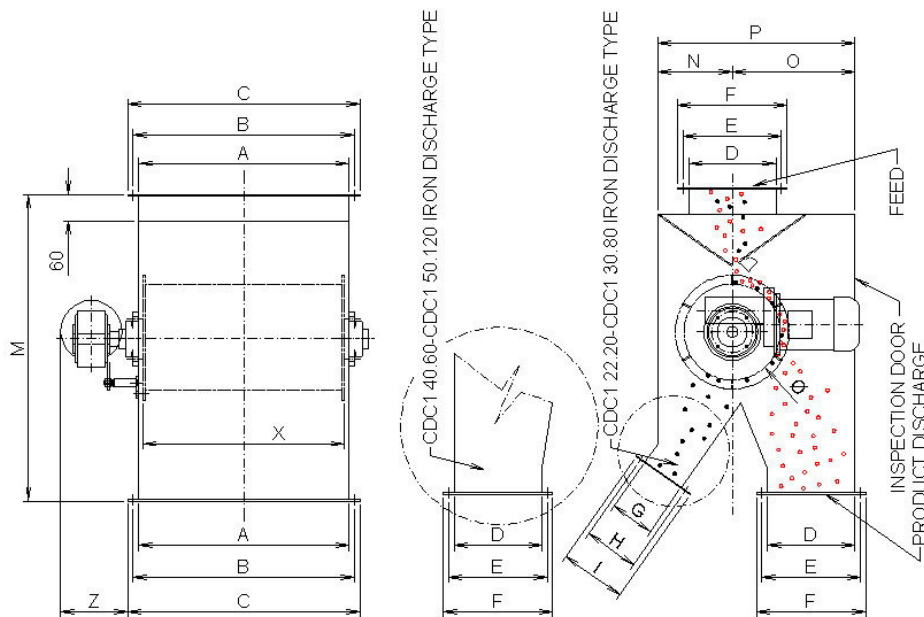
## CARATTERISTICHE TECNICHE :

Potenza elettrica: 0,16-1,1Kw

## UTILIZZO :

Deferrizzazione di prodotti fini e granulari.

## DIMENSIONI



| TYPE        | X    | A    | B    | C    | D   | E   | F   | G   | H   | I   | M    | N   | O   | P   | KW   |
|-------------|------|------|------|------|-----|-----|-----|-----|-----|-----|------|-----|-----|-----|------|
| CDC1 22.20  | 200  | 280  | 305  | 330  | 200 | 225 | 250 | 100 | 125 | 150 | 700  | 170 | 280 | 450 | 0,16 |
| CDC1 22.30  | 300  | 380  | 405  | 430  | 200 | 225 | 250 | 100 | 125 | 150 | 700  | 170 | 280 | 450 | 0,18 |
| CDC1 22.40  | 400  | 480  | 505  | 530  | 200 | 225 | 250 | 100 | 125 | 150 | 700  | 170 | 280 | 450 | 0,25 |
| CDC1 22.50  | 500  | 580  | 605  | 630  | 200 | 225 | 250 | 100 | 125 | 150 | 700  | 170 | 280 | 450 | 0,25 |
| CDC1 30.30  | 300  | 380  | 405  | 430  | 200 | 225 | 250 | 150 | 175 | 200 | 800  | 210 | 380 | 590 | 0,37 |
| CDC1 30.40  | 400  | 480  | 505  | 530  | 200 | 225 | 250 | 150 | 175 | 200 | 800  | 210 | 380 | 590 | 0,37 |
| CDC1 30.60  | 600  | 680  | 705  | 730  | 200 | 225 | 250 | 150 | 175 | 200 | 800  | 210 | 380 | 590 | 0,55 |
| CDC1 30.80  | 800  | 880  | 905  | 930  | 200 | 225 | 250 | 150 | 175 | 200 | 800  | 210 | 380 | 590 | 0,55 |
| CDC1 40.60  | 600  | 700  | 750  | 800  | 200 | 250 | 300 | /   | /   | /   | 1020 | 260 | 380 | 640 | 0,55 |
| CDC1 40.80  | 800  | 900  | 950  | 1000 | 200 | 250 | 300 | /   | /   | /   | 1020 | 260 | 380 | 640 | 0,55 |
| CDC1 40.100 | 1000 | 1100 | 1050 | 1200 | 200 | 250 | 300 | /   | /   | /   | 1020 | 260 | 380 | 640 | 0,55 |
| CDC1 40.120 | 1200 | 1300 | 1350 | 1400 | 200 | 250 | 300 | /   | /   | /   | 1020 | 260 | 380 | 640 | 0,55 |
| CDC1 50.80  | 800  | 900  | 950  | 1000 | 250 | 300 | 350 | /   | /   | /   | 1120 | 310 | 430 | 740 | 1,1  |
| CDC1 50.100 | 1000 | 1000 | 1050 | 1200 | 250 | 300 | 350 | /   | /   | /   | 1120 | 310 | 430 | 740 | 1,1  |
| CDC1 50.120 | 1200 | 1200 | 1350 | 1400 | 250 | 300 | 350 | /   | /   | /   | 1120 | 310 | 430 | 740 | 1,1  |

Quotes in millimetres.

### Tabella portate Capacity table

| ø mm   | Giri/<br>RPM | Spessore materiale sul tamburo mm - Thickness of the material on the magnetic drum mm |    |    |    |    |     |     |     |
|--|--------------|---|----|----|----|----|-----|-----|-----|
|  |              | 5   | 10 | 20 | 30 | 40 | 50  | 60  | 80  |
| Portata materiale m <sup>3</sup> /h x=1000 mm - Capacity material for deferrization m <sup>3</sup> X=1000 mm |              |   |    |    |    |    |     |     |     |
| 220  | 31           | 6   | 12 | 24 | 36 | 48 | 60  | -   | -   |
| 300  | 28           | 8   | 16 | 32 | 48 | 64 | 80  | 96  | -   |
| 400  | 23           | 9   | 18 | 36 | 54 | 72 | 90  | 108 | 144 |
| 500  | 22           | 10  | 20 | 40 | 60 | 80 | 100 | 120 | 160 |



**C.I.S. s.r.l. v. Felice Casorati n.16**  
**Z. Ind.le Mancasale, 42124 Reggio Emilia**  
**Tel. +39 0522 517286 Fax. +39 0522 513696**  
**Web site: www.cis-web.it E-mail: info@cis-web.it**  
**C.F. e P.IVA 01687420354**

# CERNITRICE IN CONDOTTA PER POLVERI CDC1



### CONSTRUCTION FEATURES:

Entirely made in Stainless steel Inox Aisi304  
Neodymium magnets 6000 Gauss in open field,  
(12'000 Gauss in closed field).  
Closed construction with flanged rectangular mouths or  
circular on request. Rolling shutter under the mouth of  
feeding for dosing of the thickness of material on the drum.

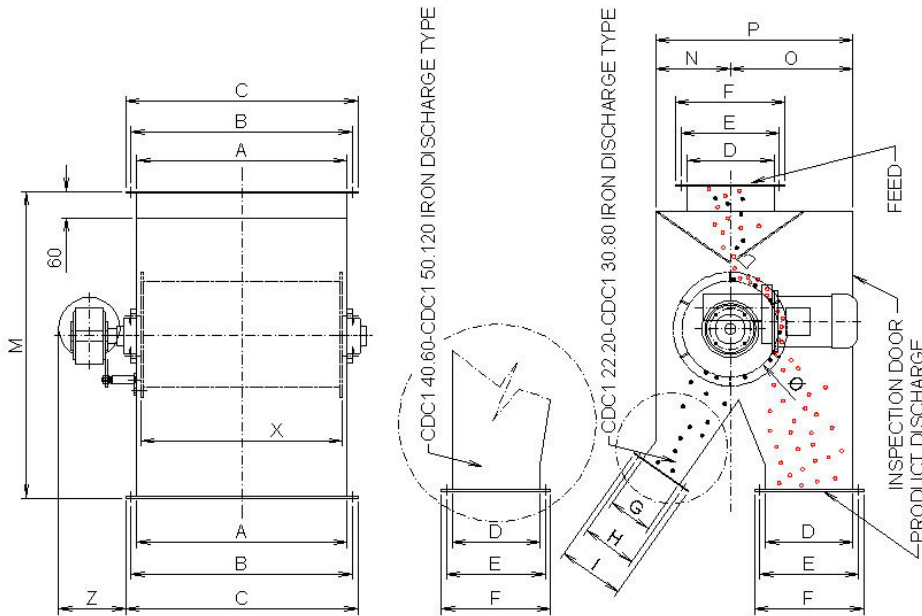
### TECHNICAL FEATURES :

Electric Power: 0,16-1,1Kw

### APPLICATION :

Iron removing of thin and granular products.

### DIMENSIONI



| TYPE        | X    | A    | B    | C    | D   | E   | F   | G   | H   | I   | M    | N   | O   | P   | KW   |
|-------------|------|------|------|------|-----|-----|-----|-----|-----|-----|------|-----|-----|-----|------|
| CDC1 22.20  | 200  | 280  | 305  | 330  | 200 | 225 | 250 | 100 | 125 | 150 | 700  | 170 | 280 | 450 | 0,16 |
| CDC1 22.30  | 300  | 380  | 405  | 430  | 200 | 225 | 250 | 100 | 125 | 150 | 700  | 170 | 280 | 450 | 0,18 |
| CDC1 22.40  | 400  | 480  | 505  | 530  | 200 | 225 | 250 | 100 | 125 | 150 | 700  | 170 | 280 | 450 | 0,25 |
| CDC1 22.50  | 500  | 580  | 605  | 630  | 200 | 225 | 250 | 100 | 125 | 150 | 700  | 170 | 280 | 450 | 0,25 |
| CDC1 30.30  | 300  | 380  | 405  | 430  | 200 | 225 | 250 | 150 | 175 | 200 | 800  | 210 | 380 | 590 | 0,37 |
| CDC1 30.40  | 400  | 480  | 505  | 530  | 200 | 225 | 250 | 150 | 175 | 200 | 800  | 210 | 380 | 590 | 0,37 |
| CDC1 30.60  | 600  | 680  | 705  | 730  | 200 | 225 | 250 | 150 | 175 | 200 | 800  | 210 | 380 | 590 | 0,55 |
| CDC1 30.80  | 800  | 880  | 905  | 930  | 200 | 225 | 250 | 150 | 175 | 200 | 800  | 210 | 380 | 590 | 0,55 |
| CDC1 40.60  | 600  | 700  | 750  | 800  | 200 | 250 | 300 | /   | /   | /   | 1020 | 260 | 380 | 640 | 0,55 |
| CDC1 40.80  | 800  | 900  | 950  | 1000 | 200 | 250 | 300 | /   | /   | /   | 1020 | 260 | 380 | 640 | 0,55 |
| CDC1 40.100 | 1000 | 1100 | 1050 | 1200 | 200 | 250 | 300 | /   | /   | /   | 1020 | 260 | 380 | 640 | 0,55 |
| CDC1 40.120 | 1200 | 1300 | 1350 | 1400 | 200 | 250 | 300 | /   | /   | /   | 1020 | 260 | 380 | 640 | 0,55 |
| CDC1 50.80  | 800  | 900  | 950  | 1000 | 250 | 300 | 350 | /   | /   | /   | 1120 | 310 | 430 | 740 | 1,1  |
| CDC1 50.100 | 1000 | 1000 | 1050 | 1200 | 250 | 300 | 350 | /   | /   | /   | 1120 | 310 | 430 | 740 | 1,1  |
| CDC1 50.120 | 1200 | 1200 | 1350 | 1400 | 250 | 300 | 350 | /   | /   | /   | 1120 | 310 | 430 | 740 | 1,1  |

Quotes in millimetres.

### Tabella portate Capacity table

| ø mm  | Giri/<br>RPM | Spessore materiale sul tamburo mm - Thickness of the material on the magnetic drum mm |    |    |    |    |     |     |     |
|---|--------------|---|----|----|----|----|-----|-----|-----|
|   |              | 5   | 10 | 20 | 30 | 40 | 50  | 60  | 80  |
| Portata materiale m <sup>3</sup> /h x=1000 mm - Capacity material for de-ironization m <sup>3</sup> X=1000 mm |              |   |    |    |    |    |     |     |     |
| 220   | 31           | 6   | 12 | 24 | 36 | 48 | 60  | -   | -   |
| 300   | 28           | 8   | 16 | 32 | 48 | 64 | 80  | 96  | -   |
| 400   | 23           | 9   | 18 | 36 | 54 | 72 | 90  | 108 | 144 |
| 500   | 22           | 10  | 20 | 40 | 60 | 80 | 100 | 120 | 160 |



**C.I.S. s.r.l. v. Felice Casorati n.16**  
**Z. Ind.le Mancasale, 42124 Reggio Emilia**  
**Tel. +39 0522 517286 Fax. +39 0522 513696**  
**Web site: www.cis-web.it E-mail: info@cis-web.it**  
**C.F. e P.IVA 01687420354**